

Project:	Camblesforth PV Solar Farm
Project Location:	Camela Lane, Camblesforth Selby, YO8 8HA
Document Title:	Layout Plan v.2
Scale:	1:5000
Sheet Format:	A1 "594 x 841"
Company:	Island Green Power UK Limited
Project Designer:	Alessio Aru, Unit 20.2, Coda Studios 189 Munster Road, London SW6 6AW

Descriptive Legend

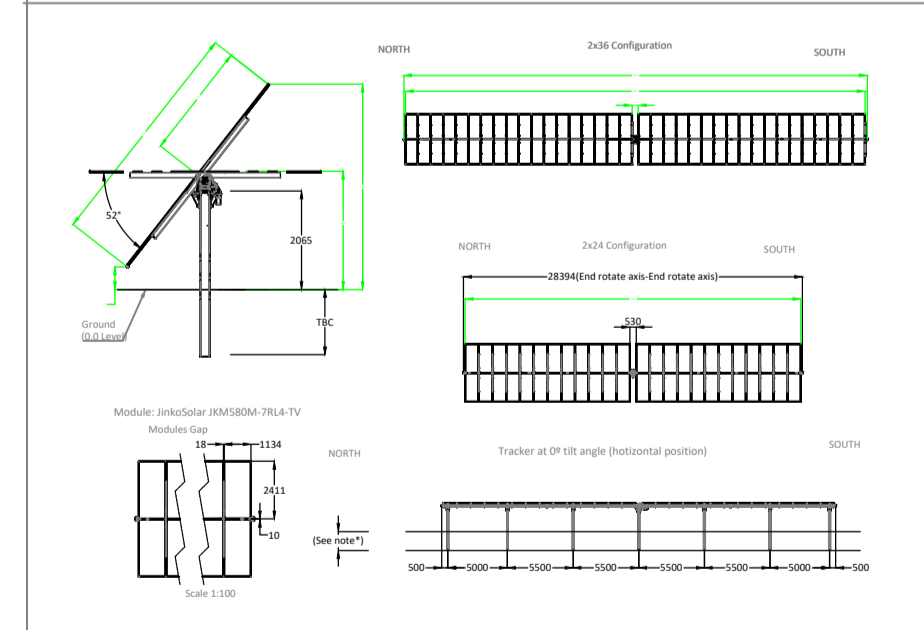
	Other Land in control of the Applicant
	Application Boundary
	Mounting Structures 2V x 36 - 2V x 24
	Conversion Unit
	Tracks
	Maintenance Access
	Fence
	Substation Area
	Storage Area
	Cable Route
	Gates
	CCTV
	Vegetation Barriers
	Point of Connection
	Acoustic Barrier

Technical Details

JINKO JKM580-7RL4-TV MODULES
 4 x MVPS WITH 1 SUNNY CENTRAL 4000
 5 x MVPS WITH 1 SUNNY CENTRAL 4200
 4 x MVPS WITH 1 SUNNY CENTRAL 4400
 PITCH 12 M / RTR GAP 7.16 M

AMENDED
DRAWING

Mounting Structures



- Conversion unit MVPS:
- 1 Inverters SMA SC 4600/4400
 - 1 Step Up Transformer
 - 1 MV Switchboard

